

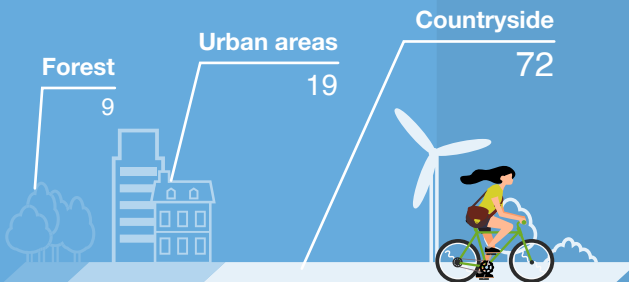
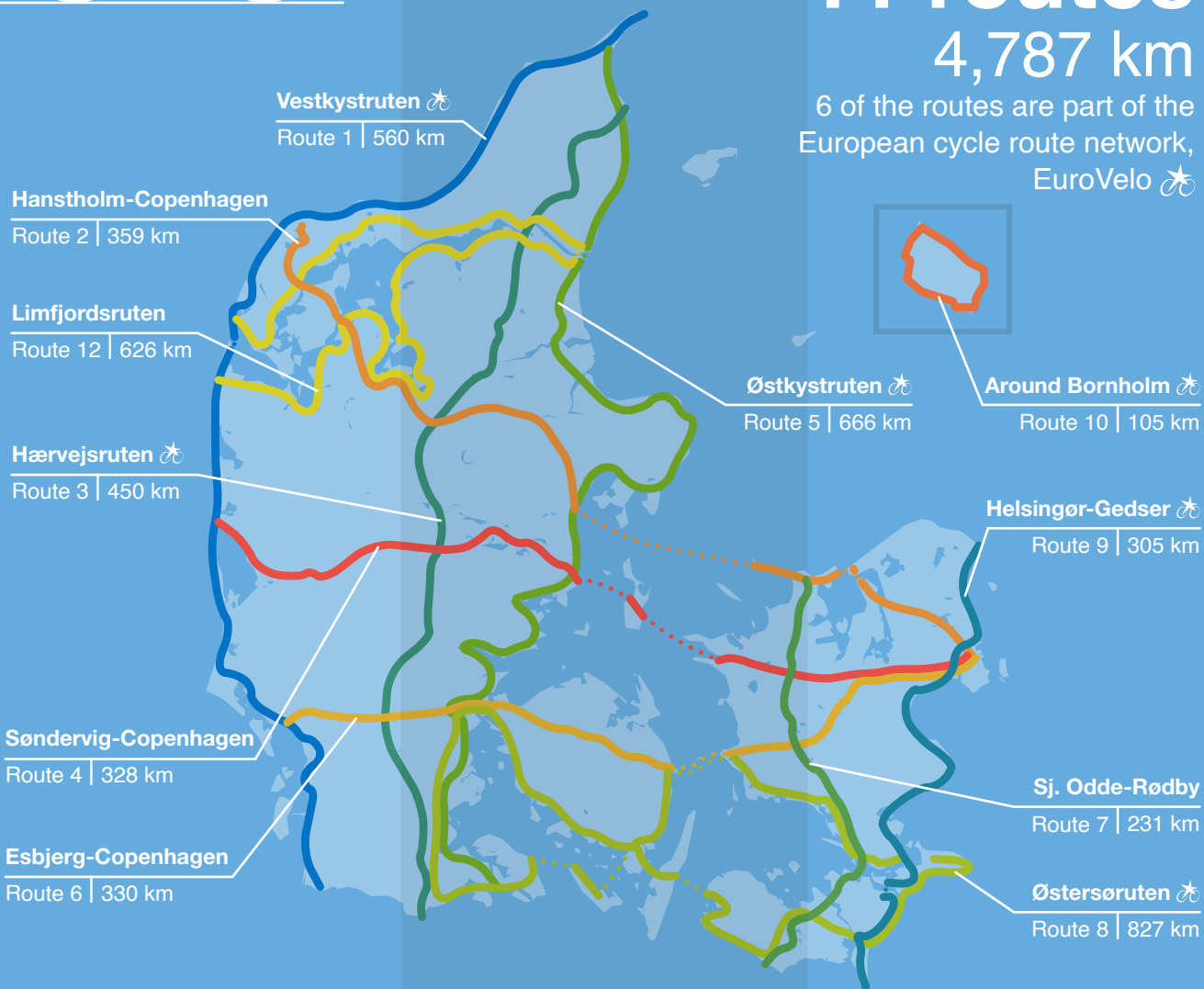
# Denmark's National Cycle Routes

11 recreational routes  
across Denmark

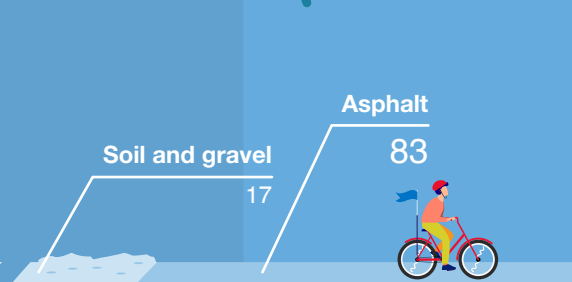


## 11 routes 4,787 km

6 of the routes are part of the European cycle route network, EuroVelo



Route course %  
Source: dataforsyningen.dk, openstreetmap.org, 2022



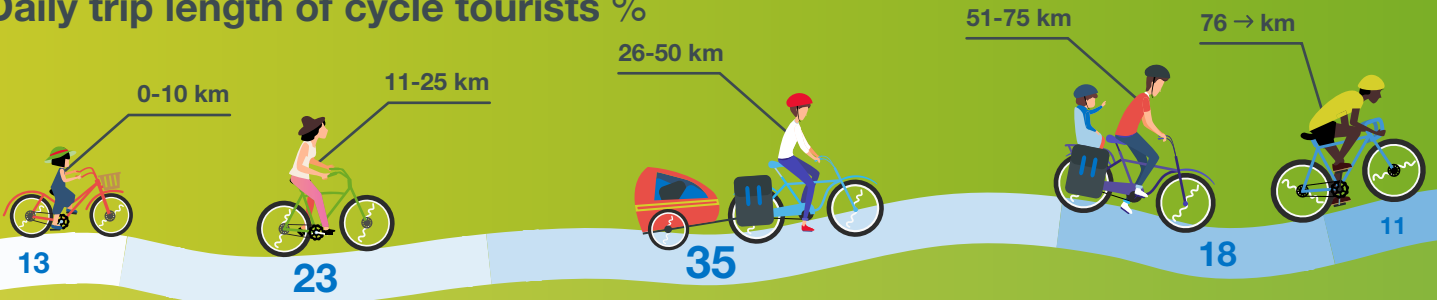
Route pavement %  
Source: Danish Cycling Tourism, 2022



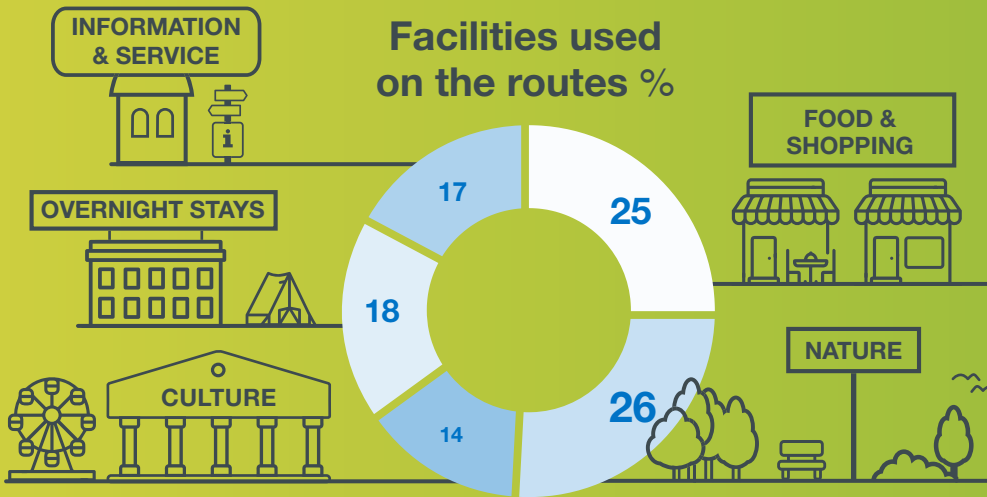
# Denmark's National Cycle Routes

Cycling tourism on the routes

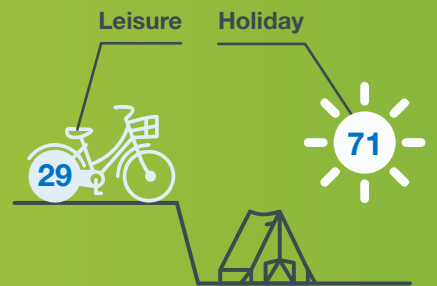
## Daily trip length of cycle tourists %



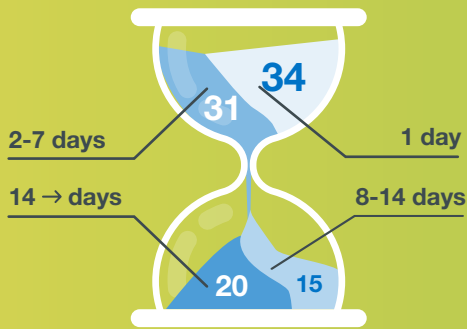
## Facilities used on the routes %



## Trip purpose %



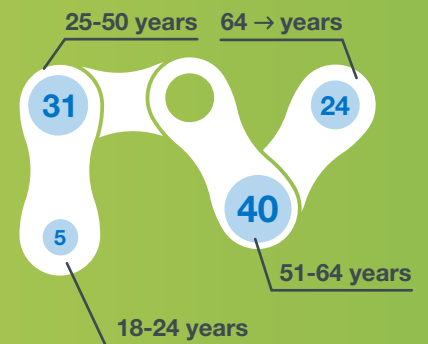
## Trip duration %



## Nationality %



## Age %



## Travel group %



Source: User survey of the Danish National Cycle Routes, The Danish Road Directorate, 2022

Denmark's National Cycle Routes are a network of 11 long routes that connect various regions and is the backbone in an interconnected network of cycle routes in Denmark that also includes regional and local routes. Denmark's National Cycle Routes are primarily intended for cycle tourists from Denmark and abroad. Several of the routes are part of the European cycle route network, EuroVelo. For more information: [www.ruter.dk](http://www.ruter.dk)